

For immediate release
25 November 2011

Encouraging assay results from Wongamine iron ore prospect, WA.

The Bullamine joint venture intersected a shallow dipping magnetite-bearing rock measuring 70 to 90 metres thick at North Wongamine when drilling a target which magnetic data suggested extended over a strike length of 500 metres (see ASX release 30 August 2011).

Encouraging assay results have been received with the first batch of results at the North Wongamine prospect (figure 1) which include substantial intersections grading above 20% Fe.

Significant drill intercepts, defined as any mineralisation of 5 metres or longer, are shown in table 1 below. A cut-off of 15% Fe was used for the intersection calculations.

Table 1. Summary of significant drilling results from North Wongamine.

Hole ID		From	To	Length (downhole)	Grade
		m	m	m	%Fe
NW11DD001	Mineralised Fe Zone	10.6	73.3	62.7	17.2
	including	10.6	33.9	23.4	36.1
		42.3	48	5.7	26.9
		57.9	73.3	15.4	29.4
NW11DD003	Mineralised Fe Zone	14.4	95.8	81.4	25.4
	including	14.4	53.0	38.6	24.6
		55.0	95.8	40.8	29.2
NW11DD004	Mineralised Fe Zone	48.0	118.8	70.8	26.0
	including	48.0	54.0	6.0	32.0
		62.3	69.4	7.1	34.4
		72.0	98.1	26.1	30.5
		102.1	118.8	16.7	25.9
NW11DD005	Mineralised Fe Zone	62.8	135.8	73.1	23.4
	including	62.8	68.8	6.1	26.1
		79.1	114.1	35.0	28.3
		119.5	135.8	16.3	26.3

Note: Intercept grades are calculated from assays of 1 metre or less lengths of ¼ core splits averaged over the stated interval. Grade estimates have been calculated by the joint venture manager and are based on assays by Ultratrace mineral laboratory in Perth. Refer to tables 2 and 3 for further details.

Metallurgical studies are planned and only after results of such studies have been received will it be possible to understand processing options and commence any economic studies. However, it is worth noting that the grades are comparable with RLC's earlier results from drilling at the Cleansweep prospect located 5 kilometres to the south east of North Wongamine. DTR tests conducted by RLC on RC chips it recovered from the Cleansweep prospect showed concentrates grading 69% Fe and less than 2.5% Si were achieved at 500 micron particle size – the largest size fraction tested (refer ASX release 28 Jan 2010, Quarterly report for period ended 31 Dec 2010).

Additional drilling is scheduled for the January to April 2012 period at North Wongamine and at two additional targets located to the east (refer figures 2 and 3).

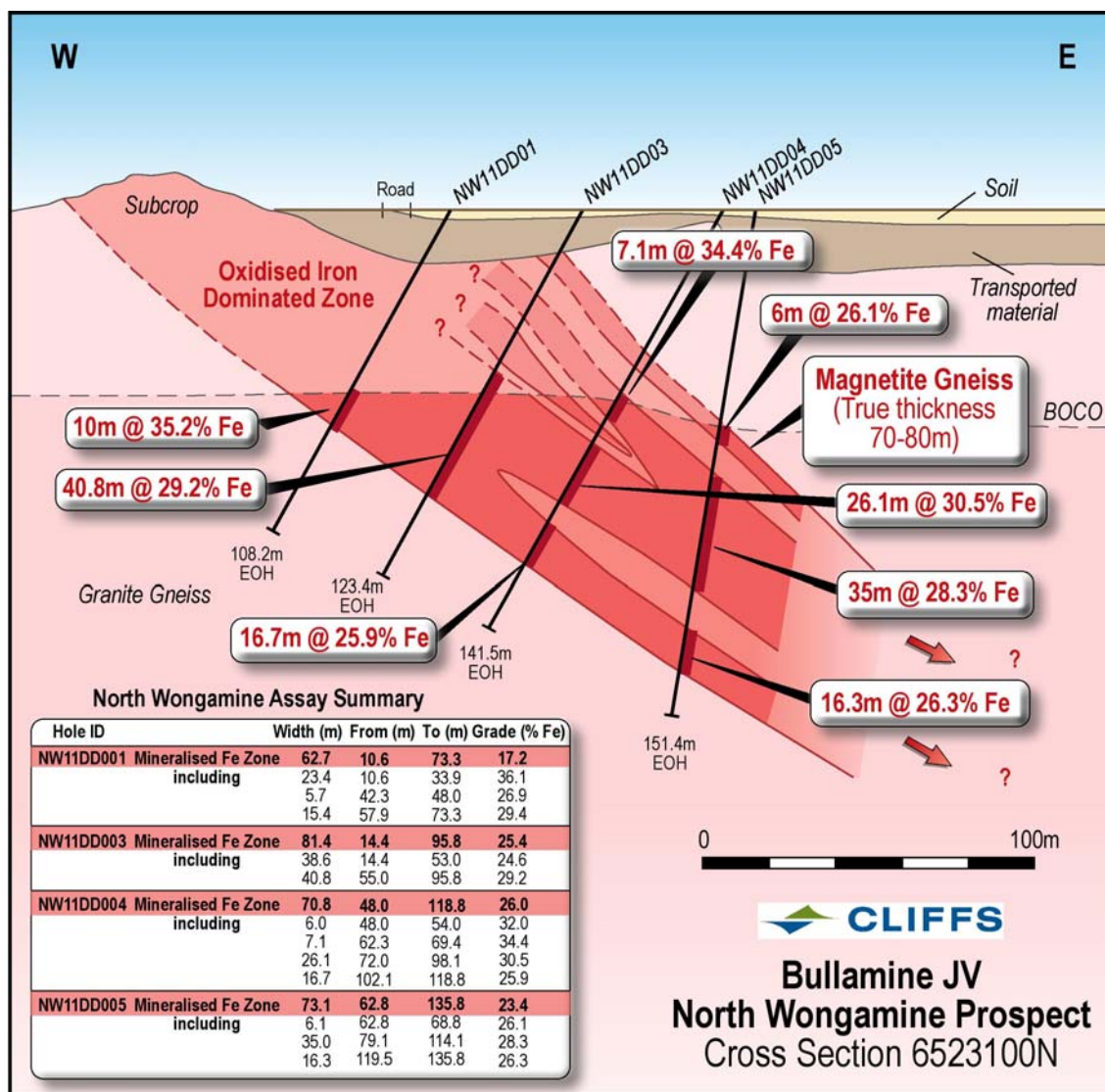


Figure 1. Mineralised intercepts at North Wongamine prospect

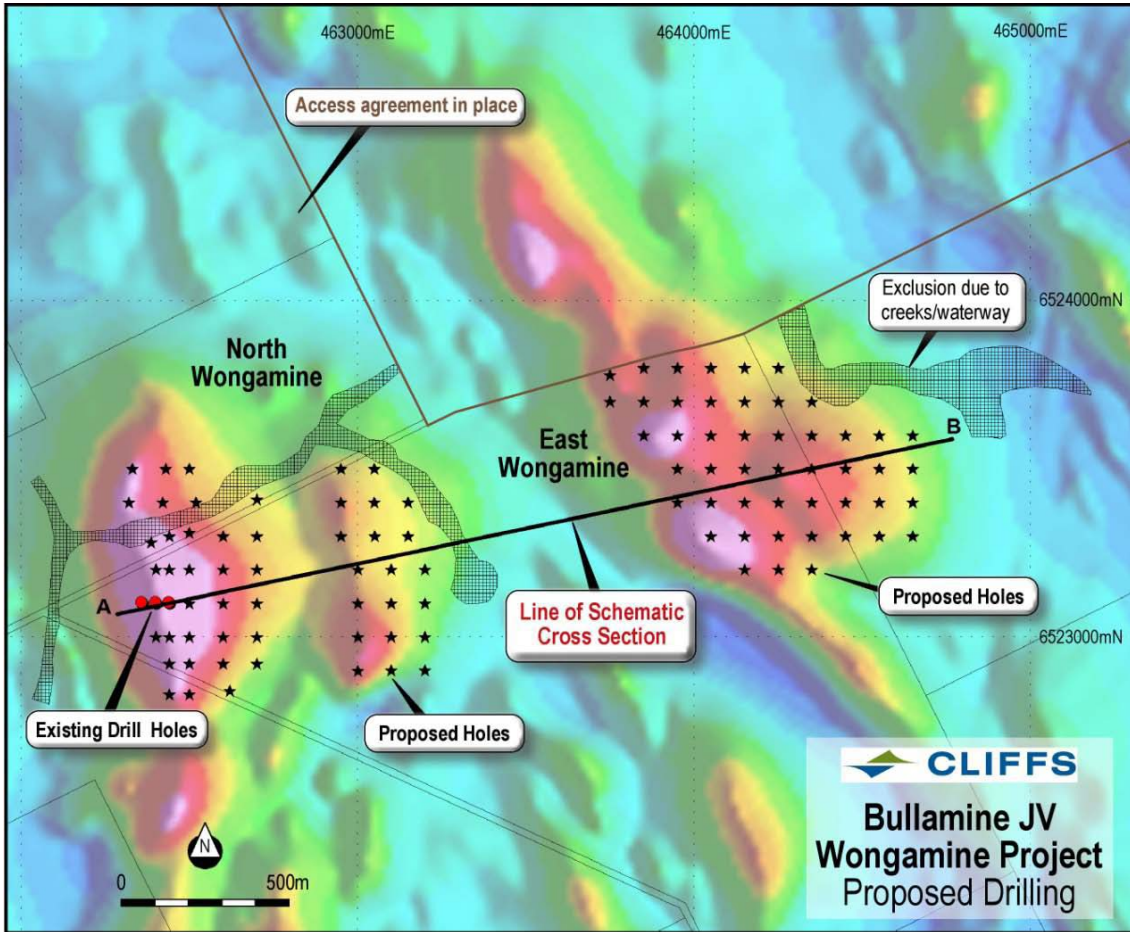


Figure 2. Location of proposed drill holes at the Wongamine prospect.

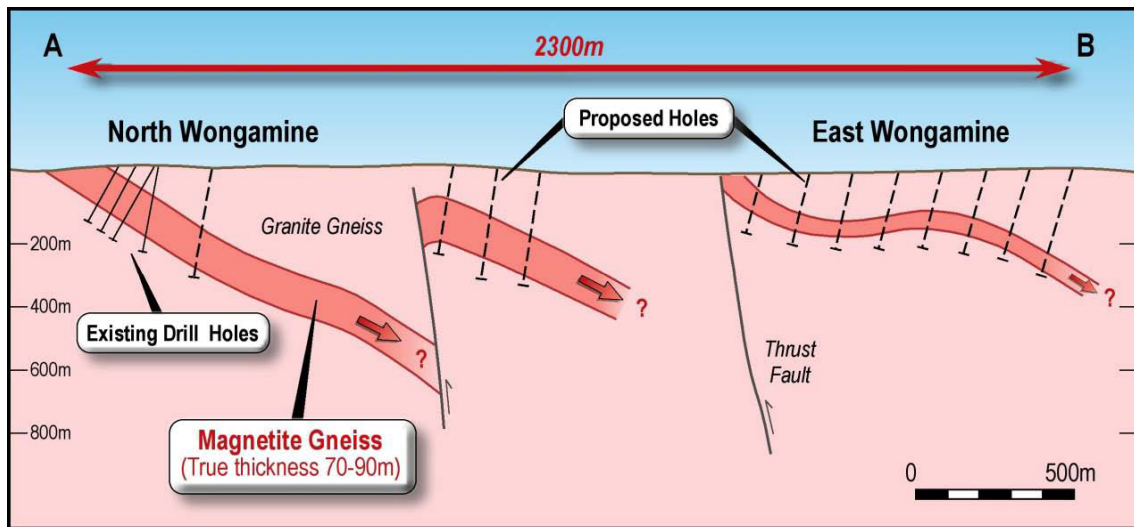


Figure 3. Interpreted cross section through the Wongamine Prospect.

Assay results have also been received for the drilling conducted at Bollo, Cleansweep, and Wattenning and grade estimates are provided in table 2.

Metallurgical test work is planned for selected core samples from Cleansweep, Bollo and North Wongamine. At this stage no further work is planned at Wattenning.

The Bullamine Iron Ore Project is a joint venture between Reedy Lagoon Corporation and Cliffs Asia Pacific Iron Ore Pty Ltd ("Cliffs"), a wholly owned subsidiary of Cliffs Natural Resources Inc. (NYSE: CLF, Paris: CLF). Cliffs is earning a 75% interest and is manager of the joint venture.

For further information, please visit www.reedylagoon.com.au
or contact
Geof Fethers, Managing Director
Telephone: (03) 8420 6280

The information in this report that relates to Exploration Results is based on information compiled by Geof Fethers and Hugh Rutter, who are members of the Australian Institute of Mining and Metallurgy (AusIMM) and the Australian Institute of Geoscientists (AIG) respectively. Geof Fethers and Hugh Rutter are directors of the Company and each has sufficient experience which is relevant to the style of mineralization and type of deposit under consideration and to the activity which they are undertaking to each qualify as a Competent Person as defined in the 2004 Edition of the "Australasian Code for the Reporting of Exploration Results, Mineral Resources and Ore Reserves (the JORC Code). Geof Fethers and Hugh Rutter consent to the inclusion in the report of the matters based on their information in the form and context in which it appears.

Reedy Lagoon Corporation Limited is exploring for:

iron ore in WA

uranium at projects in the Ashburton region (WA) on the Gawler Craton (SA) and in the Tanami (NT).

Issued shares: 48,600,000

Issued options: 13,550,000 unlisted (exercisable @ \$0.20, \$0.21, \$0.30 & \$0.50)

Share price: \$0.125 23 November 2011

Directors and management:

Jonathan Hamer, Chairman, Non-Executive Director

Geof Fethers, Managing Director, Co. Secretary

Hugh Rutter, Director

Table 2. Grade estimates as provided by the joint venture manager for down-hole intervals of all drill holes at the North Wongamine, Bollo, Cleansweep and Wattening Prospects drilled to date. Drill hole details including dip and azimuth are provided in table 3.

Hole ID	Cut Off Grade	From	To	Length (downhole)	grade ¹
		m	m	m	Fe%
North Wongamine					
NW11DD001	>15% Fe	10.6	33.9	23.4	36.1
NW11DD001	>15% Fe	42.3	48.0	5.7	26.9
NW11DD001	>15% Fe	57.9	73.3	15.4	29.4
NW11DD001	>25% Fe	10.6	33.9	23.4	36.1
NW11DD001	>25% Fe	42.3	48.0	5.7	26.9
NW11DD001	>25% Fe	62.0	72.2	10.2	35.2
NW11DD001	Mineralised Fe Zone	10.6	73.3	62.7	17.2
NW11DD003	>15% Fe	14.4	53.0	38.6	24.6
NW11DD003	>15% Fe	55.0	95.8	40.8	29.2
NW11DD003	>25% Fe	30.2	36.2	6.0	34.7
NW11DD003	>25% Fe	40.0	45.3	5.3	32.3
NW11DD003	>25% Fe	60.5	75.5	15.0	32.5
NW11DD003	>25% Fe	88.3	95.8	7.5	34.8
NW11DD003	Mineralised Fe Zone	14.4	95.8	81.4	25.4
NW11DD004	>15% Fe	48.0	69.4	21.4	26.8
NW11DD004	>15% Fe	72.0	98.1	26.1	30.5
NW11DD004	>15% Fe	102.1	118.8	16.7	25.9
NW11DD004	>25% Fe	48.0	54.0	6.0	32.0
NW11DD004	>25% Fe	62.3	69.4	7.1	34.4
NW11DD004	>25% Fe	77.8	98.1	20.3	31.8
NW11DD004	>25% Fe	108.6	118.0	9.4	31.3
NW11DD004	Mineralised Fe Zone	48.0	118.8	70.8	26.0
NW11DD005	>15% Fe	62.8	68.8	6.1	26.1
NW11DD005	>15% Fe	79.1	114.1	35.0	28.3
NW11DD005	>15% Fe	119.5	135.8	16.3	26.3
NW11DD005	>25% Fe	63.7	68.8	5.1	27.4
NW11DD005	>25% Fe	93.3	114.1	20.8	32.6
NW11DD005	>25% Fe	125.5	135.8	10.3	30.9
NW11DD005	Mineralised Fe Zone	62.8	135.8	73.1	23.4
Cleansweep					
CSDD001	no assays received at this time				
CSDD002	>15% Fe	34.3	42.6	8.3	19.6
CSDD002	>15% Fe	46.7	58.5	11.8	34.7
CSDD002	>15% Fe	60.7	69.0	8.3	29.2
CSDD002	>15% Fe	85.8	90.8	5.1	27.0
CSDD002	>15% Fe	120.5	137.6	17.1	25.4
CSDD002	>25% Fe	46.7	58.5	11.8	34.7
CSDD002	>25% Fe	60.7	69.0	8.3	29.2
CSDD002	>25% Fe	85.8	90.8	5.1	27.0
CSDD002	>25% Fe	125.3	133.6	8.3	31.4
CSDD002	Mineralised Fe Zone	34.3	137.6	103.3	17.4
1 Grades calculated based on weighted averages of downhole assay grades as recieved from Ultra Trace to the 11th November 2011.					
Samples assayed are 1 metre (or smaller) downhole lengths 1/4 core splits.					
Internal dilution included where cut off achieved over 5 meters.					
Intervals included across geological zones.					

Table 2. Continued... Grade estimates as provided by the joint venture manager for down-hole intervals of all drill holes at the North Wongamine, Bollo, Cleansweep and Wattenning Prospects drilled to date. Drill hole details including dip and azimuth are provided in table 3.

Hole ID	Cut Off Grade	From m	To m	Length (downhole) m	grade ¹ Fe%
Bollo					
BC11DD001	>15% Fe	35.6	55.8	20.2	29.2
BC11DD001	>15% Fe	68.2	79.5	11.3	27.0
BC11DD001	>25% Fe	35.6	52.0	16.4	31.7
BC11DD001	>25% Fe	73.0	79.5	6.5	33.0
BC11DD001	Mineralised Fe Zone	35.6	79.5	43.9	20.1
BCDD001	>15% Fe	73.7	82.8	9.1	33.6
BCDD001	>25% Fe	73.7	81.0	7.3	37.1
BCDD001	Mineralised Fe Zone	73.7	82.8	9.1	33.6
BCDD008	>15% Fe	47.8	75.0	27.2	29.4
BCDD008	>25% Fe	47.8	65.0	17.2	29.8
BCDD008	>25% Fe	68.0	75.0	7.0	31.3
BCDD008	Mineralised Fe Zone	47.8	75.0	27.2	29.4
BCDD012	>15% Fe	25.0	69.4	44.4	27.8
BCDD012	>25% Fe	25.0	46.7	21.7	29.6
BCDD012	>25% Fe	47.4	56.0	8.6	26.0
BCDD012	>25% Fe	62.0	69.4	7.4	30.3
BCDD012	Mineralised Fe Zone	25.0	69.4	44.4	27.8
BCDD013	>15% Fe	72.5	112.2	39.7	27.5
BCDD013	>25% Fe	72.5	88.8	16.3	29.5
BCDD013	>25% Fe	93.0	108.0	15.0	29.4
BCDD013	Mineralised Fe Zone	72.5	112.2	39.7	27.5
BCDD014	>15% Fe	82.4	134.7	52.3	27.8
BCDD014	>25% Fe	83.5	114.3	30.8	29.3
BCDD014	>25% Fe	115.6	124.0	8.4	28.3
BCDD014	>25% Fe	126.0	133.0	7.0	28.8
BCDD014	Mineralised Fe Zone	82.4	134.7	52.3	27.8
BCDD016	>15% Fe	117.0	131.5	14.5	27.8
BCDD016	>15% Fe	133.7	170.6	37.0	25.8
BCDD016	>25% Fe	125.0	131.5	6.5	31.4
BCDD016	>25% Fe	133.7	154.0	20.4	27.5
BCDD016	>25% Fe	162.0	170.6	8.6	31.2
BCDD016	Mineralised Fe Zone	117.0	170.6	53.6	25.5
Wattenning					
WT11DD001	>15% Fe	55.2	62.7	7.5	21.1
WT11DD001	Mineralised Fe Zone	44.0	92.4	48.5	6.2
1 Grades calculated based on weighted averages of downhole assay grades as recieved from Ultra Trace to the 11th November 2011.					
Samples assayed are 1 metre (or smaller) downhole lengths 1/4 core splits.					
Internal dilution included where cut off achieved over 5 meters.					
Intervals included across geological zones.					

Table 3. Drill hole details .

Hole No.	Prospect / target	Easting ¹	Northing ¹	Azimuth	Dip	Metres drilled
BCDD001	Bollo	488363	6522303	235	-55	120.3
BC11DD001	Bollo	468370	6522293	235	-55	125.0
BC11DD008	Bollo	469220	6521820	250	-70	105.0
BC11DD012	Bollo	469346	6521430	250	-55	111.4
BC11DD013	Bollo	469372	6521446	250	-55	132.4
BC11DD014	Bollo	469372	6521446	250	-65	159.3
BS11DD016	Bollo	469390	6521444	250	-70	200.4
CS11DD001	Cleansweep	465966	6518180	245	-75	150.5
CS11DD002	Cleansweep	465878	6518343	245	-75	186.5
NW11DD001	North Wongamine	462360	6523100	270	-60	108.2
NW11DD003	North Wongamine	462400	6523100	270	-60	123.4
NW11DD004	North Wongamine	462440	6523100	270	-60	141.5
NW11DD005	North Wongamine	462450	6523100	270	-80	151.4
WT11DD001	Wattening	463580	6532820	120	-55	125.9
¹ GDA 94, MGA Zone 50						