

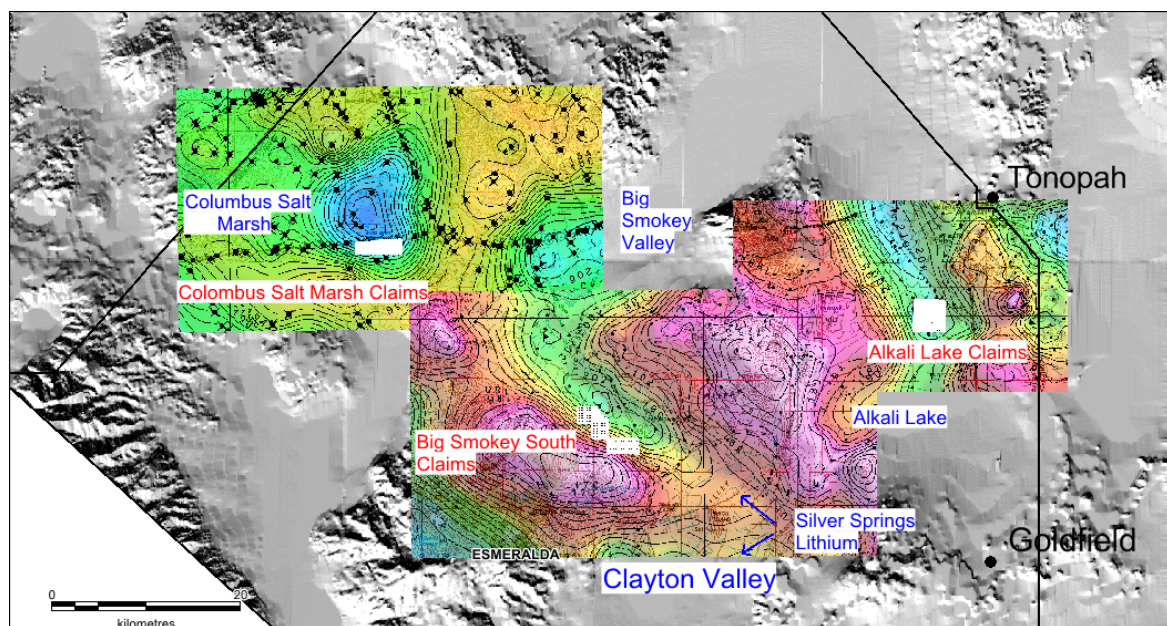


5 May 2017

## Geophysics identifies brine targets on RLC's Lithium Projects

The geophysical surveys that commenced before Easter are completed and preliminary results indicate multiple high-conductivity anomalies consistent with brine deposits.

More information will follow when the geophysical contractor delivers its report, but preliminary interpretations are highly encouraging with substantial targets indicated.



**Figure 1. Map showing location of RLC claims and Regional Gravity Image**

The surveys were designed to detect highly conductive hyper-saline aquifers which may be present at varying depths within each basin.

Managing Director Geof Fethers commented that the technical program was on track to deliver a number of targets to drill in 2017.

On behalf of the Board

Geof Fethers, Managing Director

Telephone: (03) 8420 6280

reedylagoon.com.au

Reedy Lagoon Corporation Limited  
P O Box 2236, Richmond VIC 3121  
Issued shares: 175,675,168  
Issued options: 2,700,000 unlisted  
Share price (last traded): \$0.024

Directors and management:

Jonathan Hamer, Chairman, Non-Executive Director  
Geoffrey Fethers, Managing Director, Co. Secretary  
Adrian Griffin, Non-Executive Director

## Competent Persons Statement

The information in this report as it relates to exploration results and geology was compiled by Mr Geoff Balfe who is a Member of the Australasian Institute of Mining and Metallurgy and a Certified Professional. Mr Balfe is a consultant to Reedy Lagoon Corporation Limited and Mr Balfe is a vendor to Reedy Lagoon Corporation Limited of shares in Nevada Lithium Pty Ltd. (which owns the lithium brine projects) Mr Balfe has sufficient experience which is relevant to the style of mineralisation and type of deposit under consideration and to the activity which he is undertaking to qualify as a Competent Person as defined in the 2012 Edition of the 'Australasian Code for Reporting of Exploration Results, Mineral Resources and Ore Reserves'. Mr Balfe consents to the inclusion in the report of the matters based on the information in the form and context in which it appears.